

# Data Sheet



**Seawater Reverse Osmosis (RO) Membranes**  
**LG SW 440 SR G2**

## Overview

The next generation LG SW G2 membranes have achieved record-breaking salt rejection, improving the product quality up to 45% compared with the conventional technology. With enhanced Thin Film Nanocomposite (TFN) technology, LG SW G2 membranes can significantly reduce the cost of desalination.

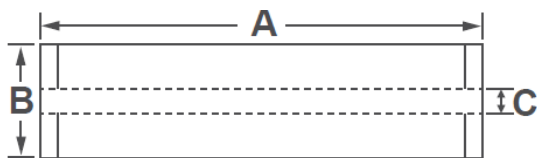
LG SW SR (Super Rejection) membranes offer the highest rejection for the best product water quality; suitable for high salinity seawater applications.

- LG SW G2 Benefits**
- ▶ **Improved permeate quality** without increasing operating pressure
  - ▶ **Reduced energy cost** without sacrificing the permeate quality
  - ▶ **Reduced capital and operation costs** for multi-pass SWRO systems

## Product Specifications

Active Membrane Area, ft <sup>2</sup> (m <sup>2</sup> )	Permeate Flow Rate, GPD (m <sup>3</sup> /d)	Stabilized Salt Rejection, %	Minimum Salt Rejection, %	Boron Rejection, %	Feed Spacer, mil
440 (41)	6,600 (25.0)	99.89	99.75	93	28

Test Conditions : 32,000 ppm NaCl, 5 ppm boron at 25°C (77°F), 800 psi (55 bar), pH 8, Recovery 8%.  
 Permeate flows for individual elements may vary +/-15%.



A, mm (in.)	B, mm (in.)	C, mm (in.)	Weight, kg (lbs.)
1,016 (40)	200 (7.9)	28.6 (1.125)	16 (35)

All dimensional information is indicative and for reference purpose only. Please contact LG Chem for detailed technical specification.

## Operating Specifications

For more information and operating guidelines, visit [www.lgwatersolutions.com](http://www.lgwatersolutions.com)

<b>Max. Applied pressure</b>	1,200 psi (82.7 bar)
<b>Max. Chlorine concentration</b>	< 0.1 ppm
<b>Max. Operating temperature</b>	45°C (113°F)
<b>pH Range, Continuous (Cleaning)</b>	2-11 (2-13)
<b>Max. Feedwater turbidity</b>	1.0 NTU
<b>Max. Feedwater SDI (15 mins)</b>	5.0
<b>Max. Feed flow</b>	75 gpm (17 m <sup>3</sup> /h)
<b>Min. Ratio of concentrate to permeate flow for any element</b>	5 : 1
<b>Max. Pressure drop (ΔP) for each element</b>	15 psi (1.0 bar)

The Membrane Elements performance is expressly conditioned on Buyer's storing, installing, operating, and maintaining Product in accordance with industry-accepted good practices and Seller's written instructions provided in the Seller's Technical Manual, which consists of LG Chem, Ltd [Technical Service Bulletins \("TSB"\)](#) and [Technical Applications Bulletins \("TAB"\)](#) and may be viewed and downloaded at [www.lgwatersolutions.com](http://www.lgwatersolutions.com).

The information and data contained herein are deemed to be accurate and reliable and are offered in good faith, but without guarantee of performance. LG Chem assumes no liability for results obtained or damages incurred through the application of the information contained herein. Customer is responsible for determining whether the products and information presented herein are appropriate for the customer's use and for ensuring that customer's workplace and disposal practices are in compliance with applicable laws and other governmental enactments. Specifications subject to change without notice. NanoH<sub>2</sub>O is the Trademark of The LG Water Solutions or an affiliated company of LG Chem. All rights reserved. © LG Chem, Ltd.